

JX Series Plunger-Type Metering Pump

Main Performance Parameters

- Max flow rate: 1200L/h
- Max discharge pressure: 50Mpa
- Within the flow range of 10% ~ 100%, the stability precision is ± 1% of rated flow
- Maximum suction lift height: 2.5m water column
- Medium temperature: -10°C ~ 100°C
- The highest ambient temperature: +40°C, the highest elevation: 1000m

Major Features

- Hard and compact design, small pump head, and optimized connection.
- Plunger contacts medium directly with high volumetric efficiency. The transmission loss is lower at high pressure.
- Variable eccentric structural adjustment ensures smooth fluctuations in flow pulsation; new machine enables the result more accurate and reasonable.
- It is suitable for conveying non-solid particles media, high viscosity media, in high pressure environment; It is not recommended for corrosive pulp and flammable, explosive, dangerous chemicals!
- Adopt the multi-channel combination seal structure of "Graphite fiber+GSJ" with excellent wear resistance and corrosion resistance, in which GSJ can fully protect the graphite fiber while generating the seal itself, greatly extending the life of the packing, and the patented structure of graphite fiber packing group can make the sealing performance of the plunger pump better.



Patent No.: ZL201410417972.0
 Patent No.: ZL201420477892.X
 Patent No.: ZL201521122345.0
 Patent No.: ZL201520947735.5

Control Mode

- Power supply: 380V/220V-50Hz/60Hz/three-phase/single-phase
- Variable frequency controller receives the external control signal and adjusts the stroke speed, input signal: 4-20 mA analog signal
- Motor controller determines three-phase motor by "on/off" mode, adjusts the output flow

Main Applications

- It is widely used in fields such as chemical, petrochemical, electricity and metallurgy etc. In particular, it is very popular in fields with high viscosity, high pressure and high temperature.

Main Components of the Fluid End

Fluid End	Pump head	Valve body, valve seat	Valve ball	Plunger	Tamping	Seal Ring
304SS	304SS	304SS	304SS/Zirconia	304+Ceramic	Graphite fiber+GSJ	Fluororubber/EPDM/PVDF/4F
316SS	316SS	316SS	304SS/Zirconia	316+Ceramic	Graphite fiber+GSJ	Fluororubber/EPDM/PVDF/4F

JX Series Plunger-Type Metering Pump Model Description

Series Flow/Pressure Fluid End Interface Electric Motor

Series

Code	Description
JX	JX Series Plunger-Type Metering Pump

Flow/Pressure

Code	Max flow (L/h)	Max pressure (Mpa)	Plunger diameter (mm)	Stroke frequency (min ⁻¹)	Stroke length (mm)	Motor power (kW)
JX1200/0.5	1200	0.5	100	130	20	1.5
JX1100/0.7	1100	0.7	95			
JX940/0.9	940	0.9	90			
JX940/0.7		0.7				
JX940/0.5		0.5				
JX840/1.1	840	1.1	85			
JX840/0.8		0.8				
JX840/0.5		0.5				
JX740/1.2	740	1.2	80			
JX740/0.9		0.9				
JX740/0.6		0.6				
JX650/1.4	650	1.4	75			
JX650/1.0		1.0				
JX650/0.7		0.7				
JX570/1.6	570	1.6	70			
JX570/1.1		1.1				
JX570/0.8		0.8				
JX490/1.8	490	1.8	65			
JX490/1.3		1.3				
JX490/0.9		0.9				
JX410/2.1	410	2.1	60			
JX410/1.6		1.6				
JX410/1.1		1.1				
JX360/2.4	360	2.4	56			
JX360/1.8		1.8				
JX360/1.2		1.2				
JX280/3.1	280	3.1	50			
JX280/2.2		2.2				
JX280/1.5		1.5				
JX230/3.8	230	3.8	45			
JX230/2.8		2.8				
JX230/1.9		1.9				
JX180/4.8	180	4.8	40			
JX180/3.5		3.5				
JX180/2.4		2.4				
JX140/6.2	140	6.2	35			
JX140/4.6		4.6				
JX140/3.1		3.1				
JX100/8.5	100	8.5	30			
JX100/6.2		6.2				
JX100/4.2		4.2				
JX70/12.0	70	12.0	25			
JX70/8.8		8.8				
JX70/6.0		6.0				
JX55/15.8	55	15.8	22			
JX55/11.7		11.7				
JX55/8.0		8.0				
JX45/19.0	45	19.0	20			
JX45/13.9		13.9				
JX45/9.5		9.5				
JX35/23.5	35	23.5	18			
JX35/17.0		17.0				
JX35/12.0		12.0				
JX25/34.0	25	34.0	15			
JX25/25.0		25.0				
JX25/17.0		17.0				
JX15/50.0	15	50.0	12			
JX15/36.0		36.0				
JX15/25.0		25.0				
JX10/50.0	10	50.0	10			
JX10/36.0		36.0				
JX10/25.0		25.0				

● Fluid End

Code	Material	Remarks
S	304SS	-----
L	316SS	-----

● Interface

Code	Description	JX10-70	JX100-410	JX490-940	JX1100-1200
P	NPT thread	1/2"M	1/2"F	1"M	1-1/2"M
F	Flange interface	DN15	DN20	DN25	DN40
K	Tube fittings	DN15	----	----	----
X	Special interface	Please consult Nanfang pump, and indicate in order			

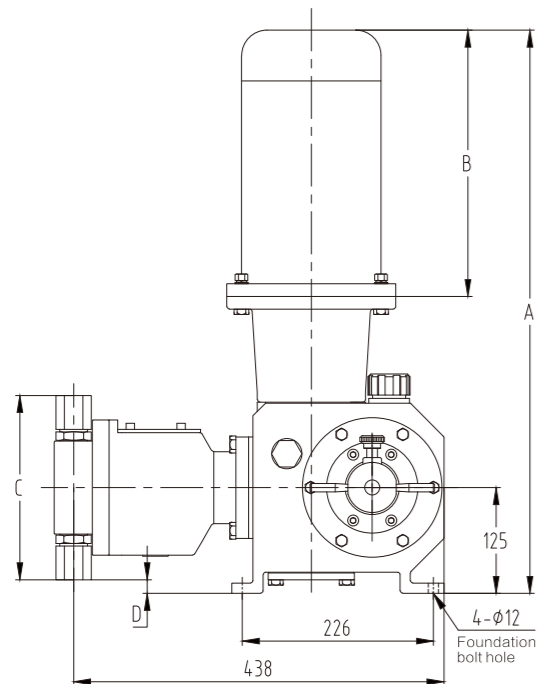
Note: the red parameters are standard configuration.

● Electric Motor

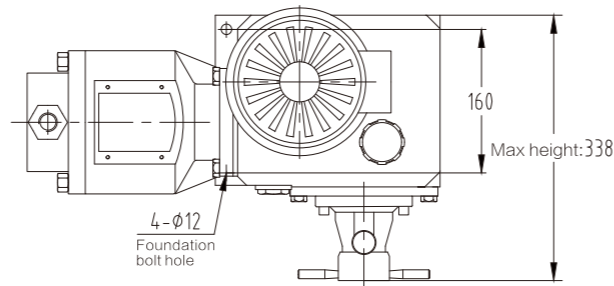
Code	Description	Code	Description
1	Three-phase motor 380V, 50Hz, 1440rpm, IP55/F	4	Variable-frequency three-phase motor 220/380V, 50Hz, 1440rpm, IP55/F, IC416
2	Single-phase motor 220V, 50Hz, 1440rpm, IP55/F	5	The motor is not provided with the pump, Retain the IEC interface
3	Three-phase explosion-proof motor 380V, 50Hz, 1440rpm, IP55/F, dIIBT4	6	Consult Nanfang Pump for other motors

■ When selecting the variable-frequency motor, its power should be at greater level.

● JX Series Dimensions



JX series side view



JX series top view

● JX Series Mounting Dimensions

Code	Motor power (kW)	A(mm)	B(mm)	C(mm)	D(mm)	E(mm)	Weight(kg)
JX1200/0.5 JX1100/0.7	1.5	666	300	423	86.5	443	94
JX940/0.9	1.5	666	300	360	55	438	88
JX940/0.7	1.1	666	280	360	55		
JX940/0.5	0.75	609	260	360	55		
JX840/1.1	1.5	666	300	360	55		
JX840/0.8	1.1	666	280	360	55		
JX840/0.5	0.75	609	260	360	55		
JX740/1.2	1.5	666	300	360	55		
JX740/0.9	1.1	666	280	360	55		
JX740/0.6	0.75	609	260	360	55		
JX650/1.4	1.5	666	300	360	55		
JX650/1.0	1.1	666	280	360	55		
JX650/0.7	0.75	609	260	360	55		
JX570/1.6	1.5	666	300	360	55		
JX570/1.1	1.1	666	280	360	55		
JX570/0.8	0.75	609	260	360	55		
JX490/1.8	1.5	666	300	360	55		
JX490/1.3	1.1	666	280	360	55		
JX490/0.9	0.75	609	260	360	55		
JX410/2.1	1.5	666	300	225	-13		
JX410/1.6	1.1	666	280	225	-13		
JX410/1.1	0.75	609	260	225	-13		
JX360/2.4	1.5	666	300	220	-15		
JX360/1.8	1.1	666	280	220	-15		
JX360/1.2	0.75	609	260	220	-15		
JX280/3.1	1.5	666	300	215	-18		
JX280/2.2	1.1	666	280	215	-18		
JX280/1.5	0.75	609	260	215	-18		
JX230/3.8	1.5	666	300	210	-20		
JX230/2.8	1.1	666	280	210	-20		
JX230/1.9	0.75	609	260	210	-20		
JX180/4.8	1.5	666	300	205	-23		
JX180/3.5	1.1	666	280	205	-23		
JX180/2.4	0.75	609	260	205	-23		
JX140/6.2	1.5	666	300	200	-25		
JX140/4.6	1.1	666	280	200	-25		
JX140/3.1	0.75	609	260	200	-25		
JX100/8.5	1.5	666	300	195	-28		
JX100/6.2	1.1	666	280	195	-28		
JX100/4.2	0.75	609	260	195	-28		
JX70/12.0	1.5	666	300	190	-30		
JX70/8.8	1.1	666	280	190	-30		
JX70/6.0	0.75	609	260	190	-30		
JX55/15.8	1.5	666	300	265	8		
JX55/11.7	1.1	666	280	265	8		
JX55/8.0	0.75	609	260	265	8		
JX45/19.0	1.5	666	300	260	5		
JX45/13.9	1.1	666	280	260	5		
JX45/9.5	0.75	609	260	260	5		
JX35/23.5	1.5	666	300	260	5		
JX35/17.0	1.1	666	280	260	5		
JX35/12.0	0.75	609	260	260	5		
JX25/34.0	1.5	666	300	260	5		
JX25/25.0	1.1	666	280	260	5		
JX25/17.0	0.75	609	260	260	5		
JX15/50.0	1.5	666	300	260	5		
JX15/36.0	1.1	666	280	260	5		
JX15/25.0	0.75	609	260	260	5		
JX10/50.0	1.5	666	300	260	5		
JX10/36.0	1.1	666	280	260	5		
JX10/25.0	0.75	609	260	260	5		