

## JZ Series Plunger-Type Metering Pump

### Main Performance Parameters

- Max flow rate: 2400L/h
- Max discharge pressure: 28Mpa
- Within the flow range of 10% ~ 100%, the stability precision is ± 1% of rated flow
- Maximum suction lift height: 2.5m water column
- Medium temperature: -10°C ~ 100°C
- The highest ambient temperature: +40°C, the highest elevation: 1000m

### Major Features

- Hard and compact design, small pump head, and optimized connection.
- Plunger contacts medium directly with high volumetric efficiency. The transmission loss is lower at high pressure.
- Variable eccentric structural adjustment ensures smooth fluctuations in flow pulsation; new machine enables the result more accurate and reasonable.
- It is suitable for conveying non-solid particles media, high viscosity media, in high pressure environment; It is not recommended for corrosive pulp and flammable, explosive, dangerous chemicals!
- Adopt the multi-channel combination seal structure of "Graphite fiber+GSJ" with excellent wear resistance and corrosion resistance, in which GSJ can fully protect the graphite fiber while generating the seal itself, greatly extending the life of the packing, and the patented structure of graphite fiber packing group can make the sealing performance of the plunger pump better.



Patent No.: ZL201410417972.0  
 Patent No.: ZL201420477892.X  
 Patent No.: ZL201521122345.0  
 Patent No.: ZL201520947735.5

### Control Mode

- Power supply: 380V/220V-50Hz/60Hz/three-phase/single-phase
- Variable frequency controller receives the external control signal and adjusts the stroke speed, input signal: 4-20 mA analog signal
- Motor controller determines three-phase motor by "on/off" mode, adjusts the output flow

### Main Applications

- It is widely used in fields such as chemical, petrochemical, electricity and metallurgy etc. In particular, it is very popular in fields with high viscosity, high pressure and high temperature.

### Main Components of the Fluid End

Fluid End	Pump head	Valve body, valve seat	Valve ball	Plunger	Tamping	Seal Ring
304SS	304SS	304SS	304SS/Zirconia	304+Ceramic	Graphite fiber+GSJ	4F/PVDF
316SS	316SS	316SS	304SS/Zirconia	316+Ceramic	Graphite fiber+GSJ	4F/PVDF

### JZ Series Plunger-Type Metering Pump Model Description

Series  Flow/Pressure  Fluid End  Interface  Electric Motor

#### Series

Code	Description
JZ	JZ series plunger-type metering pump

#### Flow/Pressure

Code	Max flow (L/h)	Max pressure (Mpa)	Plunger diameter (mm)	Stroke frequency (min <sup>-1</sup> )	Stroke length (mm)	Motor power (kW)
JZ2400/0.8	2400	0.8	115	130	32	2.2
JZ2400/0.5		0.5				1.5
JZ2400/0.4		0.4				1.1
JZ2200/0.9	2200	0.9	110			2.2
JZ2200/0.6		0.6				1.5
JZ2200/0.5		0.5				1.1
JZ2000/1.0	2000	1.0	105			2.2
JZ2000/0.7		0.7				1.5
JZ2000/0.5		0.5				1.1
JZ1800/1.1	1800	1.1	100			2.2
JZ1800/0.8		0.8				1.5
JZ1800/0.5		0.5				1.1
JZ1600/1.2	1600	1.2	95			2.2
JZ1600/0.8		0.8				1.5
JZ1600/0.6		0.6				1.1
JZ1450/1.4	1450	1.4	90			2.2
JZ1450/1.0		1.0				1.5
JZ1450/0.7		0.7				1.1
JZ1300/1.6	1300	1.6	85			2.2
JZ1300/1.1		1.1				1.5
JZ1300/0.8		0.8				1.1
JZ1150/1.8	1150	1.8	80			2.2
JZ1150/1.2		1.2				1.5
JZ1150/0.9		0.9				1.1
JZ1000/2.0	1000	2.0	75	2.2		
JZ1000/1.4		1.4		1.5		
JZ1000/1.0		1.0		1.1		
JZ890/2.3	890	2.3	70	2.2		
JZ890/1.6		1.6		1.5		
JZ890/1.2		1.2		1.1		
JZ760/2.7	760	2.7	65	2.2		
JZ760/1.8		1.8		1.5		
JZ760/1.4		1.4		1.1		
JZ650/3.1	650	3.1	60	2.2		
JZ650/2.1		2.1		1.5		
JZ650/1.6		1.6		1.1		
JZ560/3.6	560	3.6	56	2.2		
JZ560/2.5		2.5		1.5		
JZ560/1.8		1.8		1.1		
JZ450/4.5	450	4.5	50	2.2		
JZ450/3.1		3.1		1.5		
JZ450/2.3		2.3		1.1		
JZ360/5.5	360	5.5	45	2.2		
JZ360/3.8		3.8		1.5		
JZ360/2.8		2.8		1.1		
JZ290/7.0	290	7.0	40	2.2		
JZ290/4.8		4.8		1.5		
JZ290/3.5		3.5		1.1		
JZ220/9.2	220	9.2	35	2.2		
JZ220/6.3		6.3		1.5		
JZ220/4.6		4.6		1.1		
JZ160/12.5	160	12.5	30	2.2		
JZ160/8.5		8.5		1.5		
JZ160/6.3		6.3		1.1		
JZ110/17.9	110	17.9	25	2.2		
JZ110/12.2		12.2		1.5		
JZ110/9.0		9.0		1.1		
JZ70/28.0	70	28.0	20	2.2		
JZ70/19.1		19.1		1.5		
JZ70/14.0		14.0		1.1		

● Fluid End

Code	Material	Remarks
S	304SS	-----
L	316SS	-----
Z	As for special fluid end, please consult Nanfang Pump, and indicate in order	

● Interface

Code	Description	JZ70-220	JZ290-650	JZ760-1300	JZ1450-2400
F	Flange interface	DN15	DN25	DN32	DN40
K	Tube fittings	DN15	DN25	DN32	DN40
X	Special interface	Please consult Nanfang pump, and indicate in order			

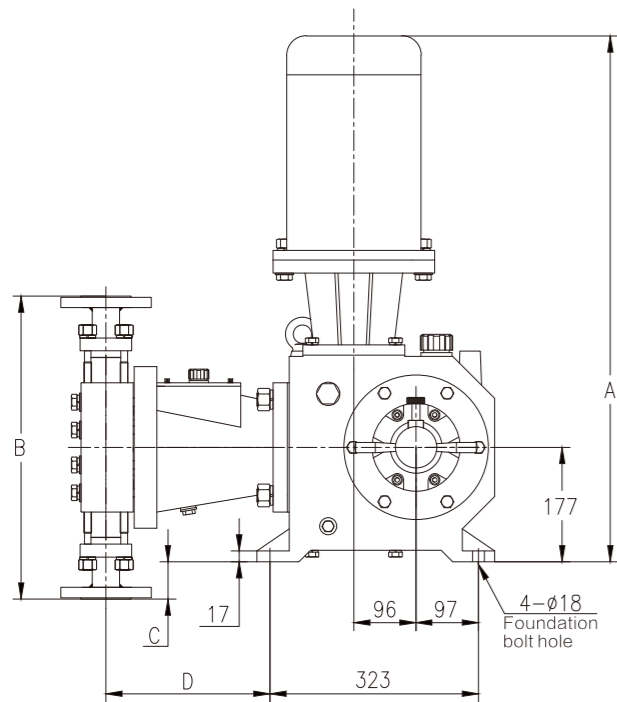
Note: the red parameters are standard configuration.

● Electric Motor

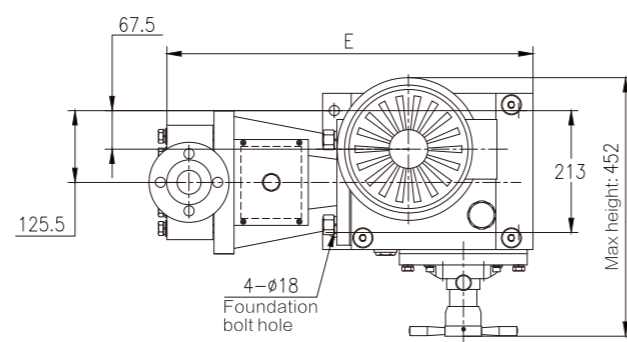
Code	Description	Code	Description
1	Three-phase motor 380V, 50Hz, 1440rpm, IP55/F	4	Variable-frequency three-phase motor 220/380V, 50Hz, 1440rpm, IP55/F, IC416
2	Single-phase motor 220V, 50Hz, 1440rpm, IP55/F	5	The motor is not provided with the pump, Retain the IEC interface
3	Three-phase explosion-proof motor 380V, 50Hz, 1440rpm, IP55/F, dIIBT4	6	Consult Nanfang Pump for other motors

■ When selecting the variable-frequency motor, its power should be at greater level.

● JZ Series Dimensions



JZ series side view



JZ series top view

● JZ Series Mounting Dimensions

Code	Motor power (kW)	A(mm)	B(mm)	C(mm)	D(mm)	E(mm)
JZ2400/0.8	2.2	814	535	90.5	259	650
JZ2400/0.5	1.5	772				
JZ2400/0.4	1.1	772				
JZ2200/0.9	2.2	814				
JZ2200/0.6	1.5	772				
JZ2200/0.5	1.1	772				
JZ2000/1.0	2.2	814				
JZ2000/0.7	1.5	772				
JZ2000/0.5	1.1	772				
JZ1800/1.1	2.2	814				
JZ1800/0.8	1.5	772				
JZ1800/0.5	1.1	772				
JZ1600/1.2	2.2	814				
JZ1600/0.8	1.5	772				
JZ1600/0.6	1.1	772				
JZ1450/1.4	2.2	814				
JZ1450/1.0	1.5	772				
JZ1450/0.7	1.1	772				
JZ1300/1.6	2.2	814				
JZ1300/1.1	1.5	772				
JZ1300/0.8	1.1	772				
JZ1150/1.8	2.2	814				
JZ1150/1.2	1.5	772				
JZ1150/0.9	1.1	772				
JZ1000/2.0	2.2	814				
JZ1000/1.4	1.5	772				
JZ1000/1.0	1.1	772				
JZ890/2.3	2.2	814				
JZ890/1.6	1.5	772				
JZ890/1.2	1.1	772				
JZ760/2.7	2.2	814				
JZ760/1.8	1.5	772				
JZ760/1.4	1.1	772				
JZ650/3.1	2.2	814				
JZ650/2.1	1.5	772				
JZ650/1.6	1.1	772				
JZ560/3.6	2.2	814				
JZ560/2.5	1.5	772				
JZ560/1.8	1.1	772				
JZ450/4.5	2.2	814				
JZ450/3.1	1.5	772				
JZ450/2.3	1.1	772				
JZ360/5.5	2.2	814				
JZ360/3.8	1.5	772				
JZ360/2.8	1.1	772				
JZ290/7.0	2.2	814				
JZ290/4.8	1.5	772				
JZ290/3.5	1.1	772				
JZ220/9.2	2.2	814				
JZ220/6.3	1.5	772				
JZ220/4.6	1.1	772				
JZ160/12.5	2.2	814				
JZ160/8.5	1.5	772				
JZ160/6.3	1.1	772				
JZ110/17.9	2.2	814				
JZ110/12.2	1.5	772				
JZ110/9.0	1.1	772				
JZ70/28.0	2.2	814				
JZ70/19.1	1.5	772				
JZ70/14.0	1.1	772				
JZ1000/1.0	1.1	772				
JZ1000/1.4	1.5	772				
JZ1000/2.0	2.2	814				
JZ1150/0.9	1.1	772				
JZ1150/1.2	1.5	772				
JZ1150/1.8	2.2	814				
JZ1300/0.8	1.1	772				
JZ1300/1.1	1.5	772				
JZ1300/1.6	2.2	814				
JZ1450/0.7	1.1	772				
JZ1450/1.0	1.5	772				
JZ1450/1.4	2.2	814				
JZ1600/0.6	1.1	772				
JZ1600/0.8	1.5	772				
JZ1600/1.2	2.2	814				
JZ1800/0.5	1.1	772				
JZ1800/0.8	1.5	772				
JZ1800/1.1	2.2	814				
JZ2000/0.5	1.1	772				
JZ2000/0.7	1.5	772				
JZ2000/1.0	2.2	814				
JZ2200/0.6	1.5	772				
JZ2200/0.9	2.2	814				
JZ2400/0.4	1.1	772				
JZ2400/0.5	1.5	772				
JZ2400/0.8	2.2	814				
JZ290/4.8	1.5	772				
JZ290/7.0	2.2	814				
JZ360/2.8	1.1	772				
JZ360/3.8	1.5	772				
JZ360/5.5	2.2	814				
JZ450/2.3	1.1	772				
JZ450/3.1	1.5	772				
JZ450/4.5	2.2	814				
JZ560/1.8	1.1	772				
JZ560/2.5	1.5	772				
JZ560/3.6	2.2	814				
JZ650/1.6	1.1	772				
JZ650/2.1	1.5	772				
JZ650/3.1	2.2	814				
JZ760/1.4	1.1	772				
JZ760/1.8	1.5	772				
JZ760/2.7	2.2	814				
JZ890/1.2	1.1	772				
JZ890/1.6	1.5	772				
JZ890/2.3	2.2	814				
JZ110/9.0	1.1	772				
JZ110/12.2	1.5	772				
JZ110/17.9	2.2	814				
JZ160/6.3	1.1	772				
JZ160/8.5	1.5	772				
JZ160/12.5	2.2	814				
JZ220/4.6	1.1	772				
JZ220/6.3	1.5	772				
JZ220/9.2	2.2	814				
JZ290/3.5	1.1	772				
JZ290/4.8	1.5	772				
JZ290/7.0	2.2	814				
JZ360/2.8	1.1	772				
JZ360/3.8	1.5	772				
JZ360/5.5	2.2	814				
JZ450/2.3	1.1	772				
JZ450/3.1	1.5	772				
JZ450/4.5	2.2	814				
JZ560/1.8	1.1	772				
JZ560/2.5	1.5	772				
JZ560/3.6	2.2	814				
JZ650/1.6	1.1	772				
JZ650/2.1	1.5	772				
JZ650/3.1	2.2	814				
JZ760/1.4	1.1	772				
JZ760/1.8	1.5	772				
JZ760/2.7	2.2	814				
JZ890/1.2	1.1	772				
JZ890/1.6	1.5	772				
JZ890/2.3	2.2	814				
JZ110/9.0	1.1	772				
JZ110/12.2	1.5	772				
JZ110/17.9	2.2	814				
JZ160/6.3	1.1	772				
JZ160/8.5	1.5	772				
JZ160/12.5	2.2	814				
JZ220/4.6	1.1	772				
JZ220/6.3	1.5	772				
JZ220/9.2	2.2	814				
JZ290/3.5	1.1	772				
JZ290/4.8	1.5	772				
JZ290/7.0	2.2	814				
JZ360/2.8	1.1	772				
JZ360/3.8	1.5	772				
JZ360/5.5	2.2	814				
JZ450/2.3	1.1	772				
JZ450/3.1	1.5	772				
JZ450/4.5	2.2	814				
JZ560/1.8	1.1	772				
JZ560/2.5	1.5	772				
JZ560/3.6	2.2	814				
JZ650/1.6	1.1	772				
JZ650/2.1	1.5	772				
JZ650/3.1	2.2	814				
JZ760/1.4	1.1	772				
JZ760/1.8	1.5	772				
JZ760/2.7	2.2	814				
JZ890/1.2	1.1	772				
JZ890/1.6	1.5	772				
JZ890/2.3	2.2	814				
JZ110/9.0	1.1	772				
JZ110/12.2	1.5	772				
JZ110/17.9	2.2	814				
JZ160/6.3	1.1	772				
JZ160/8.5	1.5	772				
JZ160/12.5	2.2	814				
JZ220/4.6	1.1	772				
JZ220/6.3	1.5	772				
JZ220/9.2	2.2	814				
JZ290/3.5	1.1	772				
JZ290/4.8	1.5	772				
JZ290/7.0	2.2	814				
JZ360/2.8	1.1	772				
JZ360/3.8	1.5	772				
JZ360/5.5	2.2	814				
JZ450/2.3	1.1	772				
JZ450/3.1	1.5	772				
JZ450/4.5	2.2	814				
JZ560/1.8	1.1	772				
JZ560/2.5	1.5	772				
JZ560/3.6	2.2	814				
JZ650/1.6	1.1	772				
JZ650/2.1	1.5	772				
JZ650/3.1	2.2	814				
JZ760/1.4	1.1	772				
JZ760/1.8	1.5	772				
JZ760/2.7	2.2	814				
JZ890/1.2	1.1	772				
JZ890/1.6	1.5	772				
JZ890/2.3	2.2	814				
JZ110/9.0	1.1	772				
JZ110/12.2	1.5	772				
JZ110/17.9	2.2	814				
JZ160/6.3	1.1	772				
JZ160/8.5	1.5	772				
JZ160/12.5	2.2	814				
JZ220/4.6	1.1	772				
JZ220/6.3	1.5	772				
JZ220/9.2	2.2	814				
JZ290/3.5	1.1	772				
JZ290/4.8	1.5	772				
JZ290/7.0	2.2	814				
JZ360/2.8	1.1	772				
JZ360/3.8	1.5	772				
JZ360/5.5	2.2	814				
JZ450/2.3	1.1	772				
JZ450/3.1	1.5	772				
JZ450/4.5	2.2	814				
JZ560/1.8	1.1	772				
JZ560/2.5	1.5	772				
JZ560/3.6	2.2	814				
JZ650/1.6	1.1	772				
JZ650/2.1	1.5	772				
JZ650/3.1	2.2	814				
JZ760/1.4	1.1	772				
JZ760/1.8	1.5	772				
JZ760/2.7	2.2	814				
JZ890/1.2	1.1	772				
JZ890/1.6	1.5	772				
JZ890/2.3	2.2	814				
JZ110/9.0	1.1	772				
JZ110/12.2	1.5	772				
JZ110/17.9	2.2	814				
JZ160/6.3	1.1	772				
JZ160/8.5	1.5	772				
JZ160/12.5	2.2	814				
JZ220/4.6	1.1	772				
JZ220/6.3	1.5	772				
JZ220/9.2	2.2	814				
JZ290/3.5	1.1	772				
JZ290/4.8	1.5	772				
JZ290/7.0	2.2	814				
JZ360/2.8	1.1	772				
JZ360/3.8	1.5	772				
JZ360/5.5	2.2	814				
JZ450/2.3	1.1	772				
JZ450/3.1	1.5	772				
JZ450/4.5	2.2	814				
JZ560/1.8	1.1	772				
JZ560/2.5	1.5	772				
JZ560/3.6	2.2	814				
JZ650/1.6	1.1	772				
JZ650/2.1	1.5	772				
JZ650/3.1	2.2	814				
JZ760/1.4	1.1	772				
JZ760/1.8	1.5	772				
JZ760/2.7	2.2	814				
JZ890/1.2	1.1	772				
JZ890/1.6	1.5	772				
JZ890/2.3	2.2	814				
JZ110/9.0	1.1	772				
JZ110/12.2	1.5	772				
JZ110/17.9	2.2	814				
JZ160/6.3	1.1	772				
JZ160/8.5	1.5	772				
JZ160/12.5	2.2	814				
JZ220/4.6	1.1	772				
JZ220/6.3	1.5	772				
JZ220/9.2	2.2	814				
JZ290/3.5	1.1	772				
JZ290/4.8	1.5	772				
JZ290/7.0	2.2	814				
JZ360/2.8	1.1	772				
JZ360/3.8	1.5	772				
JZ360/5.5	2.2	814				
JZ450/2.3	1.1	772				
JZ450/3.1	1.5	772				
JZ450/4.5	2.2	814				
JZ560/1.8	1.1	772				
JZ560/2.5	1.5	772				
JZ560/3.6	2.2	814				
JZ650/1.6	1.1	772				
JZ650/2.1	1.5	772				
JZ650/3.1	2.2	814				
JZ760/1.4	1.1	772				
JZ760/1.8	1.5	772				
JZ760/2.7	2.2	814				
JZ890/1.2	1.1	772				
JZ890/1.6	1.5	772				
JZ890/2.3	2.2	814				
JZ110/9.0	1.1	772				
JZ110/12.2	1.5	772				
JZ110/17.9	2.2	814				
JZ160/6.3	1.1	772				
JZ160/8.5	1.5	772				
JZ160/12.5	2.2	814				
JZ220/4.6	1.1	772				
JZ220/6.3	1.5	772				
JZ220/9.2	2.2	814				
JZ290/3.5	1.1	772				
JZ290/4.8	1.5	772				
JZ290/7.0	2.2	814				
JZ360/2.8	1.1	772				
JZ360/3.8	1.5	772				
JZ360/5.5	2.2	814				
JZ450/2.3	1.1	772				
JZ450/3.1	1.5	772				
JZ450/4.5	2.2	814				
JZ560/1.8	1.1	772				
JZ560/2.5	1.5	772				
JZ560/3.6	2.2	814				
JZ650/1.6	1.1	772				
JZ650/2.1	1.5	772				
JZ650/3.1	2.2	814				
JZ760/1.4	1.1	772				
JZ760/1.8	1.5	772				
JZ760/2.7	2.2	814				
JZ890/1.2	1.1	772				
JZ890/1.6	1.5	772				
JZ890/2.3</						