

Receiver
From

 Society
 Reference
 Address
 Phone
 Fax
 E-mail

Item n° :

60179887

Model :

JET 300 T IE3

Pump data

 Pressure rating : 8 bar (800 kPa)
 Min. fluid temperature : 32 °F
 Max. fluid temperature : 95 °F
 Max. Ambient temperature : 104 °F

Priming capacity :

| | | | | | | | |
|-------------|------|------|------|------|------|------|------|
| H m | 2 | 3 | 4 | 5 | 6 | 7 | 8 |
| Q US g.p.m. | 41/7 | 40/4 | 35/7 | 31/2 | 26/4 | 19/8 | 14/8 |

Requested data

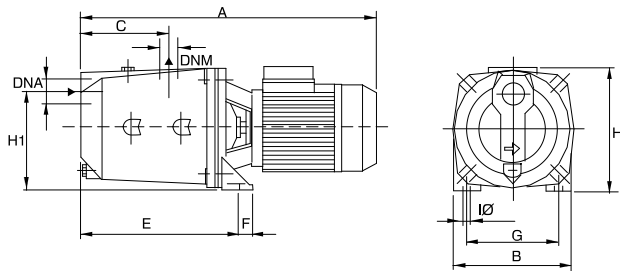
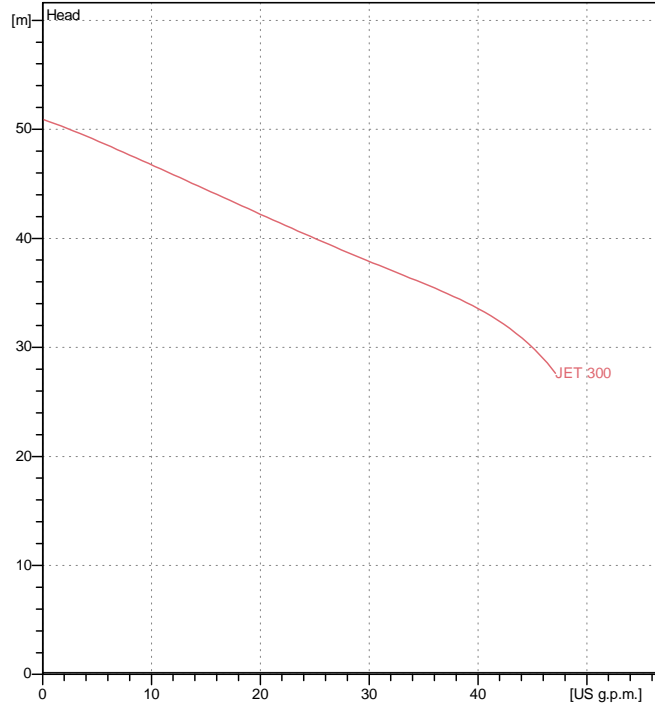
 Flow : 0/00 US g.p.m.
 Head : 0/00 m
 Fluid : Water, pure
 Fluid Temperature : 68 °F
 Density : 62/322 lb/ft³
 Kinematic viscosity : 1/0818E-5 ft²/s
 Vapor pressure : 2/34 kPa

Hydraulic data (duty point)

 Flow :
 Head :

Materials

 Pump body Cast iron GJL 200 UNI EN 1561
 Support Cast iron GJL 200 UNI EN 1561
 Impeller Noryl
 Mechanical seal Carbon/Ceramic
 OR ring NBR Rubber
 Shaft with rotor AISI 303
 Nozzle venturi dif fuser assembly Noryl

Curve tolerance according to ISO 9906

Motor data

 Motor brand : DAB
 Nominal power P2 : 2/2 kW
 Rated speed : 2850 rpm
 Rated voltage : 3~ 230 V / 400 V 50 Hz
 Nominal current : 8/5 / 4/9 A
 Degree of protection : IP 44

Dimensions in
mm

| | | | | | | | |
|-----|----------|-----|----------|-----|-----|--|--|
| A | 596 | DNM | 1" 1/4 G | H | 227 | | |
| B | 214 | E | 282 | H1 | 175 | | |
| C | 151 | F | 20 | I ? | 11 | | |
| DNA | 1" 1/2 G | G | 160 | | | | |

Weight : 27 kg

Pump connection

 Suction side : 1 " 1/2 G/ 8 bar (800 kPa)
 Discharge side : 1 " 1/4 G/ 8 bar (800 kPa)