

Receiver
From

 Society
 Reference
 Address
 Phone
 Fax
 E-mail

Item n° :

1D5311BFV

Model :

NKP-G 80-200/190/A/BAQE/30/2 IE3

Pump data

Impeller size (mm) : 190

MEI ≥ 0,40

Pressure rating : PN 16

Min. fluid temperature : 14 °F

Max. fluid temperature : 284 °F

Max. Ambient temperature : 104 °F

Requested data

Flow : 0/00 US g.p.m.

Head : 0/00 m

Fluid (%) : Water, pure

Fluid Temperature : 68 °F

 Density : 62/322 lb/ft³

 Kinematic viscosity : 1/0818E-5 ft²/s

Vapor pressure : 2/34 kPa

Real duty point

Flow :

Head :

NPSH :

Shaft power P2 :

Efficiency :

Materials

Pump body : Cast iron 250 UNI ISO 185

Support : Cast iron 250 UNI ISO 185

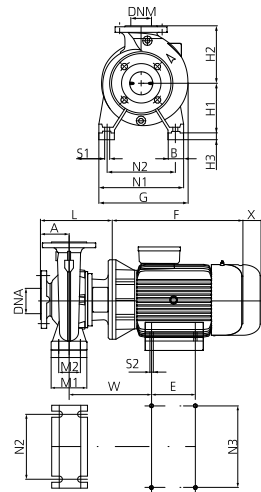
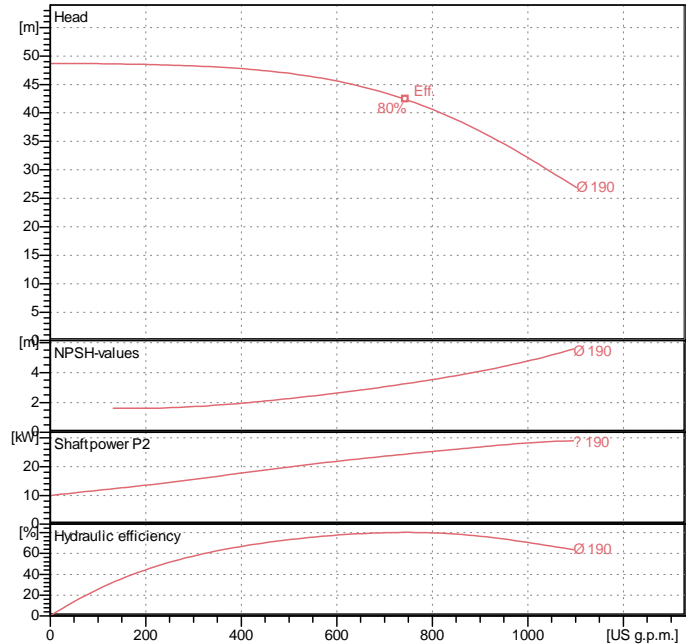
Impeller : Cast iron 250 UNI ISO 185

Mechanical seal : SEE "SHAFT SEAL" SECTION

OR ring : Ethylene propylene (EPDM)

Pump shaft : AISI 304 X5 Cr Ni 1810 UNI 6900/71

Motor : AISI 304 X5 Cr Ni 1810 UNI 6900/71

Curve tolerance according to ISO 9906

Shaft seal

Type : Rubber

Stationary part : Carbon

Rotating part : Silicon carbide

Elastomer : EPDM

Motor data

Nominal power P2 : 30 kW

Rated speed : 2950 rpm

Rated voltage : 3~ 400 V 50 Hz

Nominal current : 52 A

Degree of protection : IP 55

Weight : 374 kg

Dimensions in mm

A	125	H1	180	N2	280
B	65	H2	250	N3	318
DNA	100	H3	20	S1	M12
DNM	80	L	398	S2	M16
E	305	M1	125	W	406
F	670	M2	95	X	140
G	400	N1	345		

Pump connection

Suction side : DN 100 / PN 16

Discharge side : DN 80 / PN 16