

**Receiver**
**From**

 Society  
 Reference  
 Address  
 Phone  
 Fax  
 E-mail

**Item n° :**

1D3111B7V

**Model :**

NKP-G 50-125/115/A/BAQE/3/2 IE3

**Pump data**

Impeller size (mm) : 115

MEI ≥ 0,40

Pressure rating : PN 16

Min. fluid temperature : 14 °F

Max. fluid temperature : 284 °F

Max. Ambient temperature : 104 °F

**Requested data**

Flow : 0/00 US g.p.m.

Head : 0/00 m

Fluid (%) : Water, pure

Fluid Temperature : 68 °F

 Density : 62/322 lb/ft<sup>3</sup>

 Kinematic viscosity : 1/0818E-5 ft<sup>2</sup>/s

Vapor pressure : 2/34 kPa

**Real duty point**

Flow :

Head :

NPSH :

Shaft power P2 :

Efficiency :

**Materials**

Pump body : Cast iron 250 UNI ISO 185

Support : Cast iron 250 UNI ISO 185

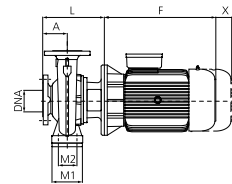
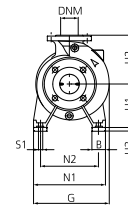
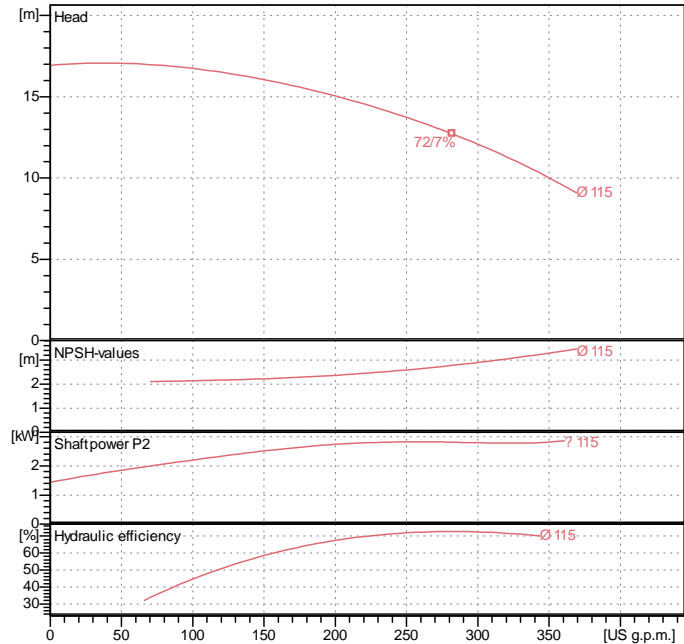
Impeller : Cast iron 250 UNI ISO 185

Mechanical seal : SEE "SHAFT SEAL" SECTION

OR ring : Ethylene propylene (EPDM)

Pump shaft : AISI 304 X5 Cr Ni 1810 UNI 6900/71

Motor : AISI 304 X5 Cr Ni 1810 UNI 6900/71

**Curve tolerance according to ISO 9906**

**Shaft seal**

 Type : Rubber  
 Stationary part : Carbon  
 Rotating part : Silicon carbide  
 Elastomer : EPDM

**Weight :** 78 kg

**Dimensions in mm**

A	100	H1	132	N2	190
B	50	H2	160	S1	M10
DNA	65	H3	-	W	-
DNM	50	L	274	X	100
E	-	M1	100		
F	301	M2	70		
G	251	N1	240		

**Motor data**

 Nominal power P2 : 3 kW  
 Rated speed : 2882 rpm  
 Rated voltage : 3~ 400 V 50 Hz  
 Nominal current : 5/85 A  
 Degree of protection : IP 55

**Pump connection**

Suction side : DN 65 / PN 16

Discharge side : DN 50 / PN 16