

Receiver
From

 Society
 Reference
 Address
 Phone
 Fax
 E-mail

Item n° :

1D2211B9V

Model :

NKP-G 40-160/158/A/BAQE/5,5/2 IE3

Pump data

Impeller size (mm) : 158

MEI ≥ 0,50

Pressure rating : PN 16

Min. fluid temperature : 14 °F

Max. fluid temperature : 284 °F

Max. Ambient temperature : 104 °F

Requested data

Flow : 0/00 US g.p.m.

Head : 0/00 m

Fluid (%) : Water, pure

Fluid Temperature : 68 °F

 Density : 62/322 lb/ft³

 Kinematic viscosity : 1/0818E-5 ft²/s

Vapor pressure : 2/34 kPa

Real duty point

Flow :

Head :

NPSH :

Shaft power P2 :

Efficiency :

Materials

Pump body : Cast iron 250 UNI ISO 185

Support : Cast iron 250 UNI ISO 185

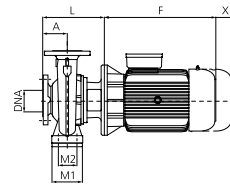
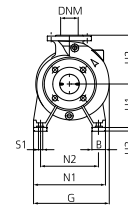
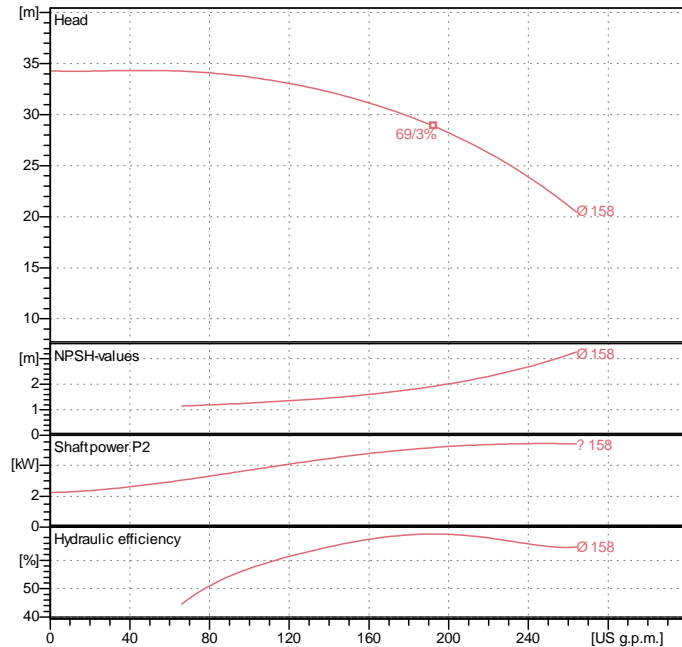
Impeller : Cast iron 250 UNI ISO 185

Mechanical seal : SEE "SHAFT SEAL" SECTION

OR ring : Ethylene propylene (EPDM)

Pump shaft : AISI 304 X5 Cr Ni 1810 UNI 6900/71

Motor : AISI 304 X5 Cr Ni 1810 UNI 6900/71

Curve tolerance according to ISO 9906

Shaft seal

 Type : Rubber
 Stationary part : Carbon
 Rotating part : Silicon carbide
 Elastomer : EPDM

Motor data

 Nominal power P2 : 5/5 kW
 Rated speed : 2918 rpm
 Rated voltage : 3~ 400 V 50 Hz
 Nominal current : 10/4 A
 Degree of protection : IP 55

Weight : 110 kg

Dimensions in mm

Dimension	Value	Dimension	Value	Dimension	Value
A	80	H2	160	S1	M10
B	50	H3	20	X	100
DNA	65	L	293		
DNM	40	M1	100		
F	390	M2	70		
G	300	N1	240		
H1	132	N2	190		

Pump connection

Suction side : DN 65 / PN 16

Discharge side : DN 40 / PN 16