

Receiver
From

 Society
 Reference
 Address
 Phone
 Fax
 E-mail

Item n° :

1D2111B6U

Model :

NKP-G 40-125/120/A/BAQE/2,2/2 IE3

Pump data

Impeller size (mm) : 120

MEI ≥ 0,40

Pressure rating : PN 16

Min. fluid temperature : 14 °F

Max. fluid temperature : 284 °F

Max. Ambient temperature : 104 °F

Requested data

Flow : 0/00 US g.p.m.

Head : 0/00 m

Fluid (%) : Water, pure

Fluid Temperature : 68 °F

Density : 62/322 lb/ft³

Kinematic viscosity : 1/0818E-5 ft²/s

Vapor pressure : 2/34 kPa

Real duty point

Flow :

Head :

NPSH :

Shaft power P2 :

Efficiency :

Materials

Pump body : Cast iron 250 UNI ISO 185

Support : Cast iron 250 UNI ISO 185

Impeller : Cast iron 250 UNI ISO 185

Mechanical seal : SEE "SHAFT SEAL" SECTION

OR ring : Ethylene propylene (EPDM)

Pump shaft : AISI 304 X5 Cr Ni 1810 UNI 6900/71

Motor : AISI 304 X5 Cr Ni 1810 UNI 6900/71

Shaft seal

Type : Rubber

Stationary part : Carbon

Rotating part : Silicon carbide

Elastomer : EPDM

Motor data

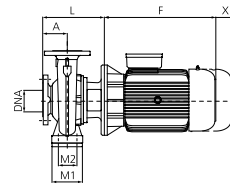
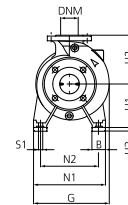
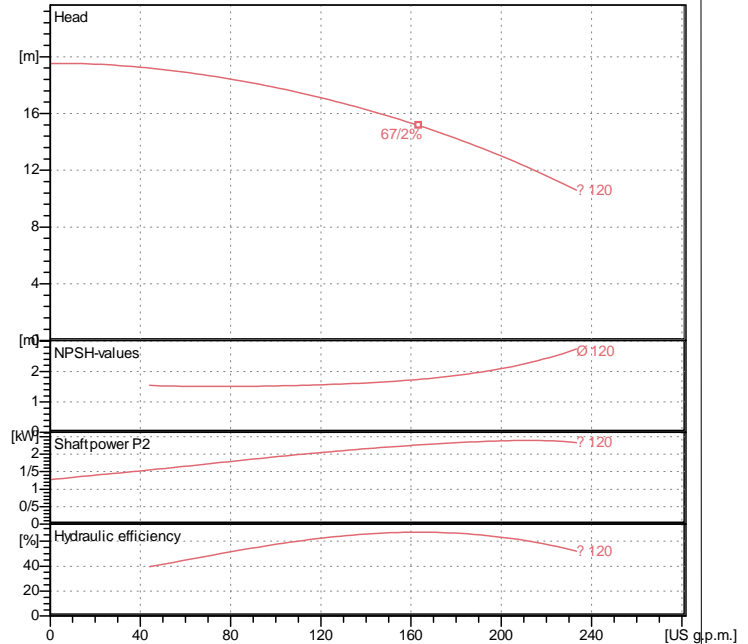
Nominal power P2 : 2/2 kW

Rated speed : 2872 rpm

Rated voltage : 3~ 230 V / 400 V 50 Hz

Nominal current : 8/23 / 4/75 A

Degree of protection : IP 55

Curve tolerance according to ISO 9906

Weight : 70 kg

Dimensions in mm

Dimension	Value	Dimension	Value	Dimension	Value
A	80	H2	140	S1	M10
B	50	H3	-	X	100
DNA	65	L	226		
DNM	40	M1	100		
F	272	M2	70		
G	234	N1	210		
H1	112	N2	160		

Pump connection

Suction side : DN 65 / PN 16

Discharge side : DN 40 / PN 16