

**Receiver**
**From**

 Society  
 Reference  
 Address  
 Phone  
 Fax  
 E-mail

**Item n° :**

1D1311B9V

**Model :**

NKP-G 32-200/190/A/BAQE/5,5/2 IE3

**Pump data**

Impeller size (mm) : 190

MEI ≥ 0,40

Pressure rating : PN 16

Min. fluid temperature : 14 °F

Max. fluid temperature : 284 °F

Max. Ambient temperature : 104 °F

**Requested data**

Flow : 0/00 US g.p.m.

Head : 0/00 m

Fluid (%) : Water, pure

Fluid Temperature : 68 °F

 Density : 62/322 lb/ft<sup>3</sup>

 Kinematic viscosity : 1/0818E-5 ft<sup>2</sup>/s

Vapor pressure : 2/34 kPa

**Real duty point**

Flow :

Head :

NPSH :

Shaft power P2 :

Efficiency :

**Materials**

Pump body : Cast iron 250 UNI ISO 185

Support : Cast iron 250 UNI ISO 185

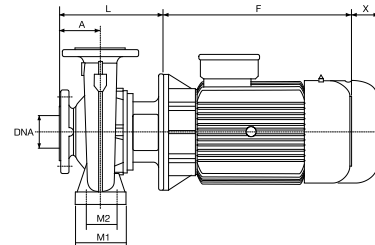
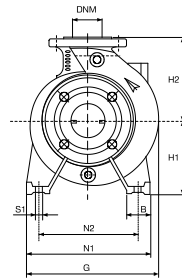
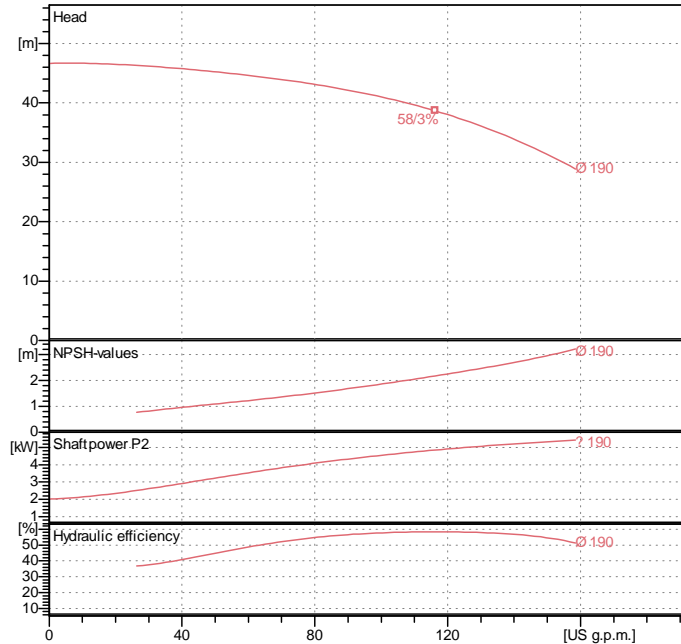
Impeller : Cast iron 250 UNI ISO 185

Mechanical seal : SEE "SHAFT SEAL" SECTION

OR ring : Ethylene propylene (EPDM)

Pump shaft : AISI 304 X5 Cr Ni 1810 UNI 6900/71

Motor : AISI 304 X5 Cr Ni 1810 UNI 6900/71

**Curve tolerance according to ISO 9906**

**Shaft seal**

Type : Rubber

Stationary part : Carbon

Rotating part : Silicon carbide

Elastomer : EPDM

**Motor data**

Nominal power P2 : 5/5 kW

Rated speed : 2918 rpm

Rated voltage : 3~ 400 V

50 Hz

Nominal current : 10/4 A

Degree of protection : IP 55

**Weight :** 117 kg

**Dimensions in mm**

A	80	H2	180	X	100
B	50	L	293		
DNA	50	M1	100		
DNM	32	M2	70		
F	390	N1	240		
G	300	N2	190		
H1	160	S1	M10		

**Pump connection**

Suction side : DN 50 / PN 16

Discharge side : DN 32 / PN 16