

**Receiver**
**From**

 Society  
 Reference  
 Address  
 Phone  
 Fax  
 E-mail

**Item n° :**

1D1211B9V

**Model :**

NKP-G 32-160/177/A/BAQE/5,5/2 IE3

**Pump data**

Impeller size (mm) : 177

MEI ≥

Pressure rating : PN 16

Min. fluid temperature : 14 °F

Max. fluid temperature : 284 °F

Max. Ambient temperature : 104 °F

**Requested data**

Flow : 0/00 US g.p.m.

Head : 0/00 m

Fluid (%) : Water, pure

Fluid Temperature : 68 °F

 Density : 62/322 lb/ft<sup>3</sup>

 Kinematic viscosity : 1/0818E-5 ft<sup>2</sup>/s

Vapor pressure : 2/34 kPa

**Real duty point**

Flow :

Head :

NPSH :

Shaft power P2 :

Efficiency :

**Materials**

Pump body : Cast iron 250 UNI ISO 185

Support : Cast iron 250 UNI ISO 185

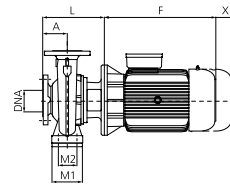
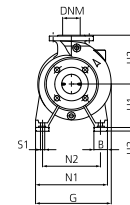
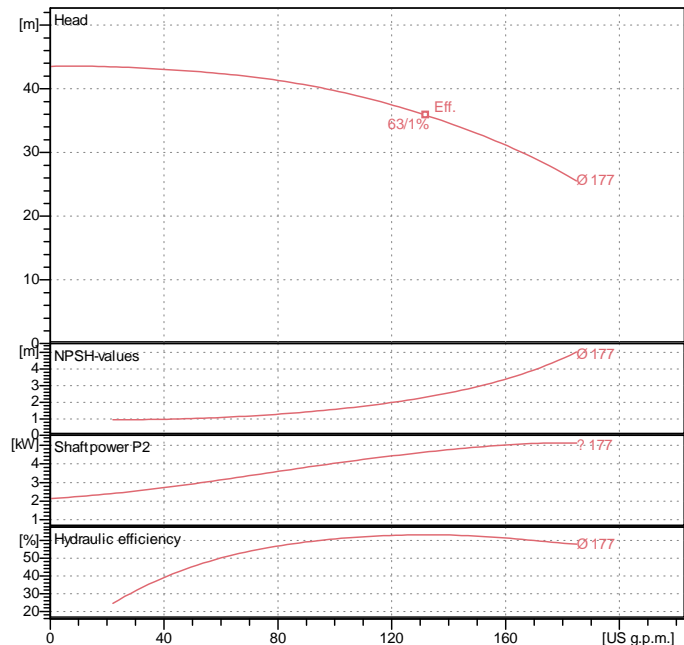
Impeller : Cast iron 250 UNI ISO 185

Mechanical seal : SEE "SHAFT SEAL" SECTION

OR ring : Ethylene propylene (EPDM)

Pump shaft : AISI 304 X5 Cr Ni 1810 UNI 6900/71

Motor : AISI 304 X5 Cr Ni 1810 UNI 6900/71

**Curve tolerance according to ISO 9906**

**Shaft seal**

Type : Rubber

Stationary part : Carbon

Rotating part : Silicon carbide

Elastomer : EPDM

**Motor data**

Nominal power P2 : 5/5 kW

Rated speed : 2918 rpm

Rated voltage : 3~ 400 V 50 Hz

Nominal current : 10/4 A

Degree of protection : IP 55

**Weight :** 105 kg

**Dimensions in mm**

|     |     |    |     |    |     |
|-----|-----|----|-----|----|-----|
| A   | 80  | H1 | 132 | N2 | 190 |
| B   | 50  | H2 | 160 | S1 | M10 |
| DNA | 50  | H3 | 20  | W  | -   |
| DNM | 32  | L  | 293 | X  | 100 |
| E   | -   | M1 | 100 |    |     |
| F   | 390 | M2 | 70  |    |     |
| G   | 300 | N1 | 240 |    |     |

**Pump connection**

Suction side : DN 50 / PN 16

Discharge side : DN 32 / PN 16