

Receiver
From

 Society
 Reference
 Address
 Phone
 Fax
 E-mail

Item n° :

1D1111B7V

Model :

NKP-G 32-125/142/A/BAQE/3/2 IE3

Pump data

Impeller size (mm) : 142

MEI ≥ 0,40

Pressure rating : PN 16

Min. fluid temperature : 14 °F

Max. fluid temperature : 284 °F

Max. Ambient temperature : 104 °F

Requested data

Flow : 0/00 US g.p.m.

Head : 0/00 m

Fluid (%) : Water, pure

Fluid Temperature : 68 °F

Density : 62/322 lb/ft³

Kinematic viscosity : 1/0818E-5 ft²/s

Vapor pressure : 2/34 kPa

Real duty point

Flow :

Head :

NPSH :

Shaft power P2 :

Efficiency :

Materials

Pump body : Cast iron 250 UNI ISO 185

Support : Cast iron 250 UNI ISO 185

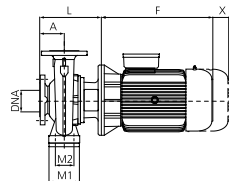
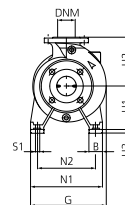
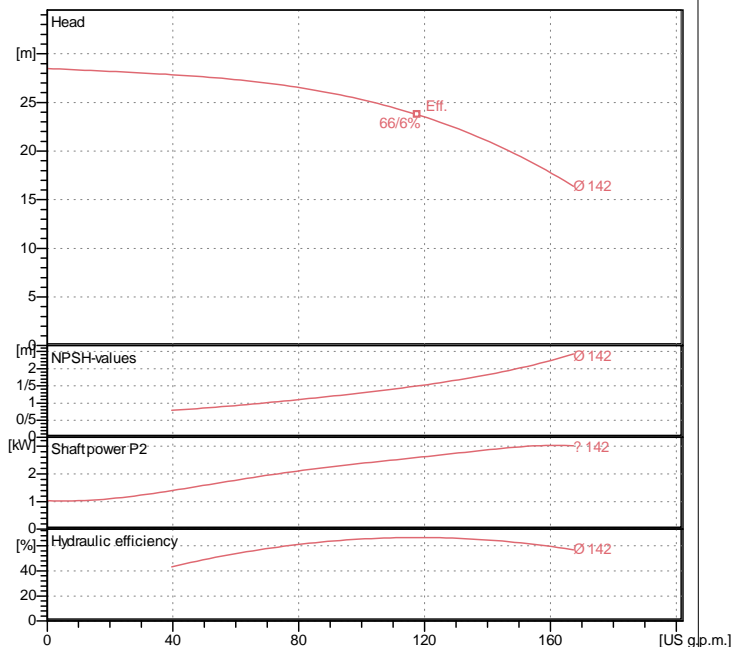
Impeller : Cast iron 250 UNI ISO 185

Mechanical seal : SEE "SHAFT SEAL" SECTION

OR ring : Ethylene propylene (EPDM)

Pump shaft : AISI 304 X5 Cr Ni 1810 UNI 6900/71

Motor : AISI 304 X5 Cr Ni 1810 UNI 6900/71

Curve tolerance according to ISO 9906

Shaft seal

Type	Rubber
Stationary part	Carbon
Rotating part	Silicon carbide
Elastomer	EPDM

Motor data

Nominal power P2 :	3 kW	
Rated speed :	2882 rpm	
Rated voltage :	3~ 400 V	50 Hz
Nominal current :	5/85 A	
Degree of protection :	IP 55	

Weight : 67 kg

Dimensions in mm

A	80	H2	140	S1	M10
B	50	H3	20	X	100
DNA	50	L	254		
DNM	32	M1	100		
F	301	M2	70		
G	250	N1	190		
H1	112	N2	140		

Pump connection

Suction side :	DN 50 / PN 16
Discharge side :	DN 32 / PN 16