

Receiver
From

 Society
 Reference
 Address
 Phone
 Fax
 E-mail

Item n° :

1D1111B5U

Model :

NKP-G 32-125/120/A/BAQE/1,5/2 IE3

Pump data

Impeller size (mm) : 120

MEI ≥ 0,40

Pressure rating : PN 16

Min. fluid temperature : 14 °F

Max. fluid temperature : 284 °F

Max. Ambient temperature : 104 °F

Requested data

Flow : 0/00 US g.p.m.

Head : 0/00 m

Fluid (%) : Water, pure

Fluid Temperature : 68 °F

Density : 62/322 lb/ft³

Kinematic viscosity : 1/0818E-5 ft²/s

Vapor pressure : 2/34 kPa

Real duty point

Flow :

Head :

NPSH :

Shaft power P2 :

Efficiency :

Materials

Pump body : Cast iron 250 UNI ISO 185

Support : Cast iron 250 UNI ISO 185

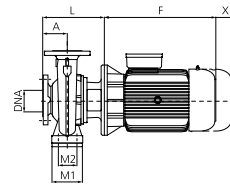
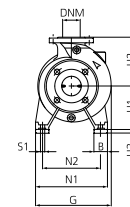
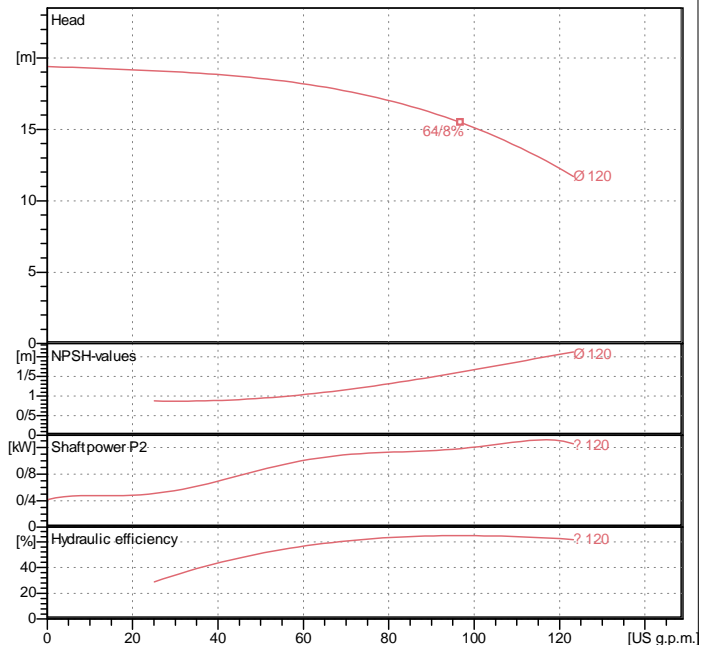
Impeller : Cast iron 250 UNI ISO 185

Mechanical seal : SEE "SHAFT SEAL" SECTION

OR ring : Ethylene propylene (EPDM)

Pump shaft : AISI 304 X5 Cr Ni 1810 UNI 6900/71

Motor : AISI 304 X5 Cr Ni 1810 UNI 6900/71

Curve tolerance according to ISO 9906

Shaft seal

 Type : Rubber
 Stationary part : Carbon
 Rotating part : Silicon carbide
 Elastomer : EPDM

Motor data

 Nominal power P2 : 1/5 kW
 Rated speed : 2883 rpm
 Rated voltage : 3~ 230 V / 400 V 50 Hz
 Nominal current : 5/8 / 3/35 A
 Degree of protection : IP 55

Weight : 52 kg

Dimensions in mm

Dimension	Value	Dimension	Value	Dimension	Value
A	80	H2	140	S1	M10
B	50	H3	-	X	100
DNA	50	L	226		
DNM	32	M1	100		
F	247	M2	70		
G	234	N1	190		
H1	112	N2	140		

Pump connection

Suction side : DN 50 / PN 16

Discharge side : DN 32 / PN 16