

Receiver
From

 Society
 Reference
 Address
 Phone
 Fax
 E-mail

Item n° :

1D1111B4U

Model :

NKP-G 32-125/110/A/BAQE/1,1/2 IE3

Pump data

Impeller size (mm) : 110

MEI ≥ 0,40

Pressure rating : PN 16

Min. fluid temperature : 14 °F

Max. fluid temperature : 284 °F

Max. Ambient temperature : 104 °F

Requested data

Flow : 0/00 US g.p.m.

Head : 0/00 m

Fluid (%) : Water, pure

Fluid Temperature : 68 °F

Density : 62/322 lb/ft³

Kinematic viscosity : 1/0818E-5 ft²/s

Vapor pressure : 2/34 kPa

Real duty point

Flow :

Head :

NPSH :

Shaft power P2 :

Efficiency :

Materials

Pump body : Cast iron 250 UNI ISO 185

Support : Cast iron 250 UNI ISO 185

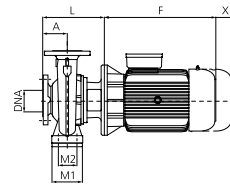
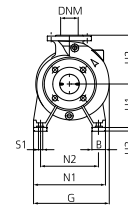
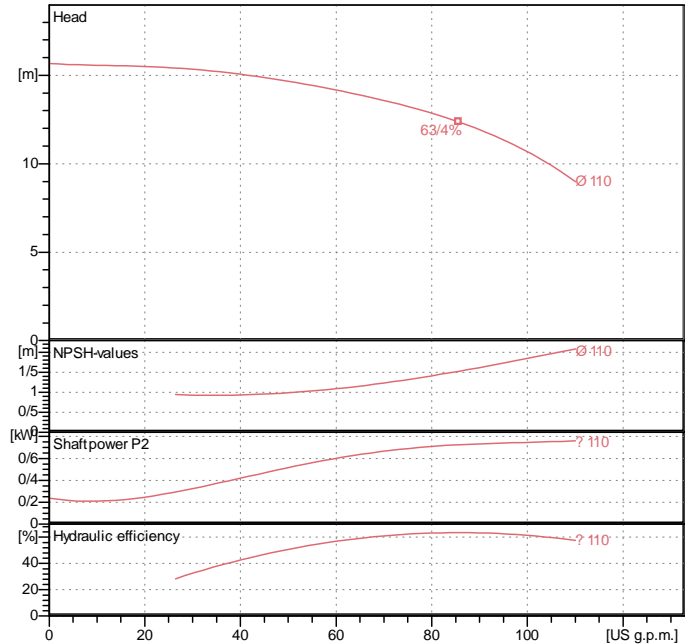
Impeller : Cast iron 250 UNI ISO 185

Mechanical seal : SEE "SHAFT SEAL" SECTION

OR ring : Ethylene propylene (EPDM)

Pump shaft : AISI 304 X5 Cr Ni 1810 UNI 6900/71

Motor : AISI 304 X5 Cr Ni 1810 UNI 6900/71

Curve tolerance according to ISO 9906

Shaft seal

Type : Rubber

Stationary part : Carbon

Rotating part : Silicon carbide

Elastomer : EPDM

Motor data

Nominal power P2 : 1/1 kW

Rated speed : 2830 rpm

Rated voltage : 3~ 400 V / 230 V 50 Hz

Nominal current : 2/36 / 4/07 A

Degree of protection : IP 55

Weight : 40 kg

Dimensions in mm

| | | | | | |
|-----|-----|----|-----|----|-----|
| A | 80 | H2 | 140 | S1 | M10 |
| B | 50 | H3 | - | X | 100 |
| DNA | 50 | L | 226 | | |
| DNM | 32 | M1 | 100 | | |
| F | 234 | M2 | 70 | | |
| G | 234 | N1 | 190 | | |
| H1 | 112 | N2 | 140 | | |

Pump connection

Suction side : DN 50 / PN 16

Discharge side : DN 32 / PN 16