

Receiver
From

 Society
 Reference
 Address
 Phone
 Fax
 E-mail

Item n° :

1D4211B5W

Model :

NKM-G 65-160/165/A/BAQE/1,5/4 IE3

Pump data

Impeller size (mm) : 165

MEI ≥ 0,60

Pressure rating : PN 16

Min. fluid temperature : 14 °F

Max. fluid temperature : 284 °F

Max. Ambient temperature : 104 °F

Requested data

Flow : 0/00 US g.p.m.

Head : 0/00 m

Fluid (%) : Water, pure

Fluid Temperature : 68 °F

 Density : 62/322 lb/ft³

 Kinematic viscosity : 1/0818E-5 ft²/s

Vapor pressure : 2/34 kPa

Real duty point

Flow :

Head :

NPSH :

Shaft power P2 :

Efficiency :

Materials

Pump body : Cast iron 250 UNI ISO 185

Support : Cast iron 250 UNI ISO 185

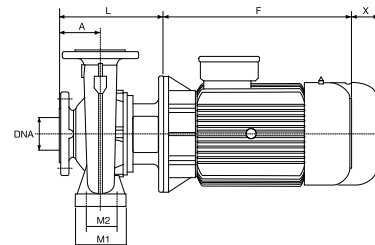
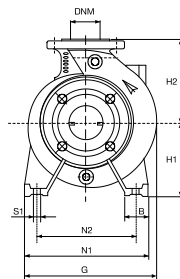
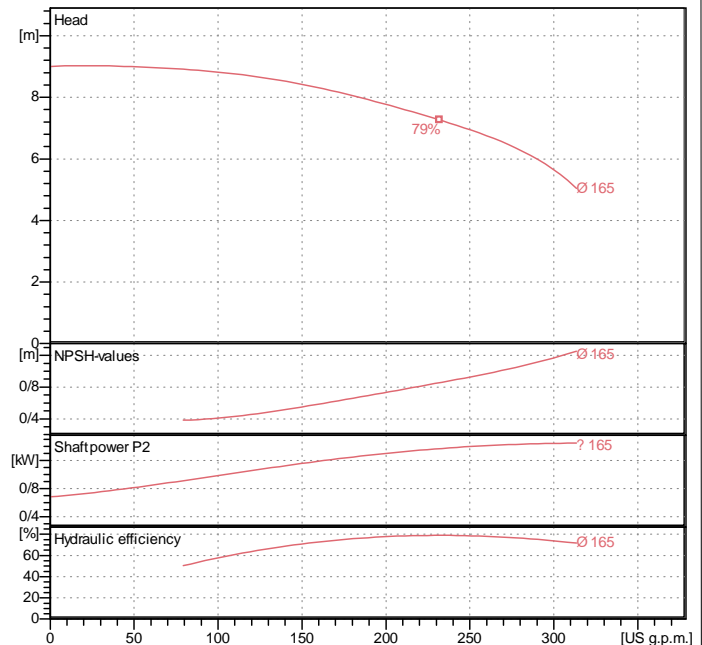
Impeller : Cast iron 250 UNI ISO 185

Mechanical seal : SEE "SHAFT SEAL" SECTION

OR ring : Ethylene propylene (EPDM)

Pump shaft : AISI 304 X5 Cr Ni 1810 UNI 6900/71

Motor : AISI 304 X5 Cr Ni 1810 UNI 6900/71

Curve tolerance according to ISO 9906

Shaft seal

 Type : Rubber
 Stationary part : Carbon
 Rotating part : Silicon carbide
 Elastomer : EPDM

Motor data

 Nominal power P2 : 1/5 kW
 Rated speed : 1435 rpm
 Rated voltage : 3~ 230 V / 400 V 50 Hz
 Nominal current : 6/24 / 3/6 A
 Degree of protection : IP 55

Weight : 64 kg

Dimensions in mm

| | | | | | |
|-----|-----|----|-----|---|-----|
| A | 100 | H2 | 200 | X | 100 |
| B | 65 | L | 246 | | |
| DNA | 80 | M1 | 125 | | |
| DNM | 65 | M2 | 95 | | |
| F | 272 | N1 | 280 | | |
| G | 302 | N2 | 212 | | |
| H1 | 160 | S1 | M10 | | |

Pump connection

 Suction side : DN 80 / PN 16
 Discharge side : DN 65 / PN 16