

Receiver
From

 Society
 Reference
 Address
 Phone
 Fax
 E-mail

Item n° :

1D3411B8X

Model :

NKM-G 50-250/263/A/BAQE/4/4 IE3

Pump data

Impeller size (mm) : 263

MEI ≥ 0,60

Pressure rating : PN 16

Min. fluid temperature : 14 °F

Max. fluid temperature : 284 °F

Max. Ambient temperature : 104 °F

Requested data

Flow : 0/00 US g.p.m.

Head : 0/00 m

Fluid (%) : Water, pure

Fluid Temperature : 68 °F

 Density : 62/322 lb/ft³

 Kinematic viscosity : 1/0818E-5 ft²/s

Vapor pressure : 2/34 kPa

Real duty point

Flow :

Head :

NPSH :

Shaft power P2 :

Efficiency :

Materials

Pump body : Cast iron 250 UNI ISO 185

Support : Cast iron 250 UNI ISO 185

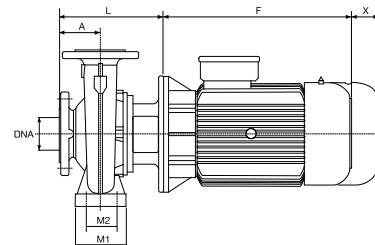
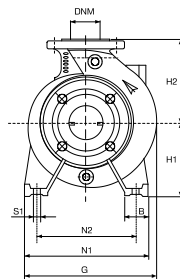
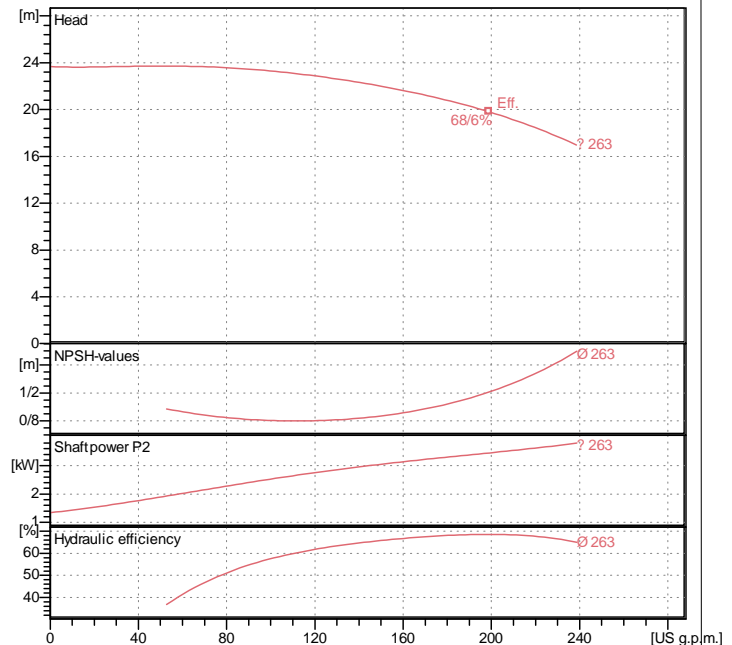
Impeller : Cast iron 250 UNI ISO 185

Mechanical seal : SEE "SHAFT SEAL" SECTION

OR ring : Ethylene propylene (EPDM)

Pump shaft : AISI 304 X5 Cr Ni 1810 UNI 6900/71

Motor : AISI 304 X5 Cr Ni 1810 UNI 6900/71

Curve tolerance according to ISO 9906

Shaft seal

Type : Rubber

Stationary part : Carbon

Rotating part : Silicon carbide

Elastomer : EPDM

Motor data

Nominal power P2 : 4 kW

Rated speed : 1449 rpm

Rated voltage : 3~ 400 V

50 Hz

Nominal current : 7/95 A

Degree of protection : IP 55

Weight : 98 kg

Dimensions in mm

Dimension	Value	Dimension	Value	Dimension	Value
A	100	H2	225	X	100
B	65	L	274		
DNA	65	M1	125		
DNM	50	M2	95		
F	301	N1	320		
G	343	N2	250		
H1	180	S1	M10		

Pump connection

Suction side : DN 65 / PN 16

Discharge side : DN 50 / PN 16