

**Receiver**
**From**

 Society  
 Reference  
 Address  
 Phone  
 Fax  
 E-mail

**Item n° :**

1D2211B23

**Model :**

NKM-G 40-160/153/A/BAQE/0,55/4

**Pump data**

Impeller size (mm) : 153

 MEI  $\geq$  0,40

Pressure rating : PN 16

Min. fluid temperature : 14 °F

Max. fluid temperature : 284 °F

Max. Ambient temperature : 104 °F

**Requested data**

Flow : 0/00 US g.p.m.

Head : 0/00 m

Fluid (%) : Water, pure

Fluid Temperature : 68 °F

 Density : 62/322 lb/ft<sup>3</sup>

 Kinematic viscosity : 1/0818E-5 ft<sup>2</sup>/s

Vapor pressure : 2/34 kPa

**Real duty point**

Flow :

Head :

NPSH :

Shaft power P2 :

Efficiency :

**Materials**

Pump body : Cast iron 250 UNI ISO 185

Support : Cast iron 250 UNI ISO 185

Impeller : Cast iron 250 UNI ISO 185

Mechanical seal : SEE "SHAFT SEAL" SECTION

OR ring : Ethylene propylene (EPDM)

Pump shaft : AISI 304 X5 Cr Ni 1810 UNI 6900/71

Motor : AISI 304 X5 Cr Ni 1810 UNI 6900/71

**Shaft seal**

Type : Rubber

Stationary part : Carbon

Rotating part : Silicon carbide

Elastomer : EPDM

**Motor data**

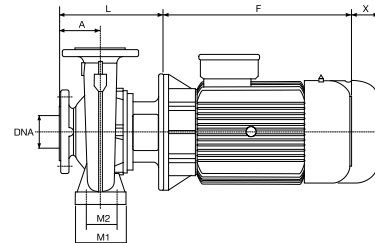
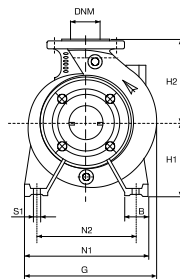
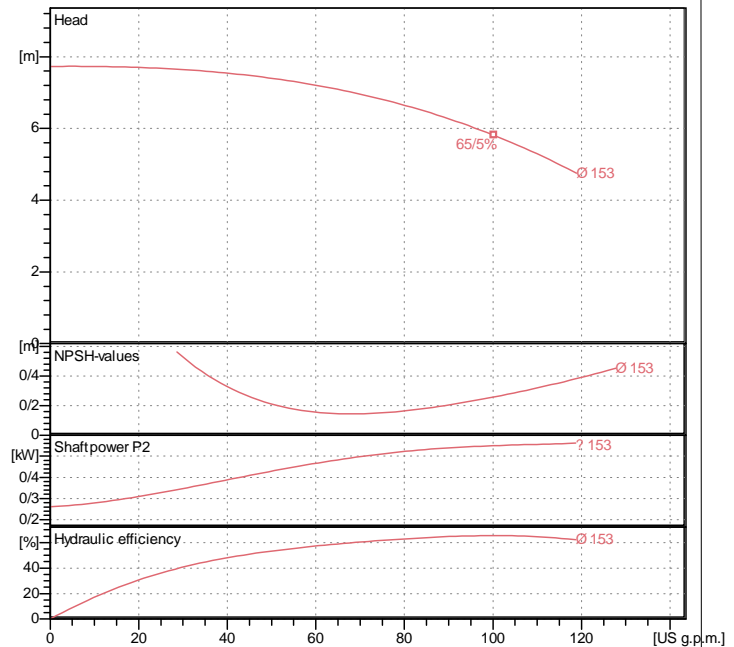
Nominal power P2 : 0/55 kW

Rated speed : 1400 rpm

Rated voltage : 3~ 230 V / 400 V 50 Hz

Nominal current : 2/6 / 1/5 A

Degree of protection : IP 55

**Curve tolerance according to ISO 9906**

**Weight :** 48 kg

**Dimensions in mm**

A	80	H2	160	X	100
B	50	L	226		
DNA	65	M1	100		
DNM	40	M2	70		
F	234	N1	240		
G	253	N2	190		
H1	132	S1	M10		

**Pump connection**

Suction side : DN 65 / PN 16

Discharge side : DN 40 / PN 16