

Receiver
From

 Society
 Reference
 Address
 Phone
 Fax
 E-mail

Item n° :

1D2111B23

Model :

NKM-G 40-125/142/A/BAQE/0,55/4

Pump data

Impeller size (mm) : 142

MEI ≥ 0,40

Pressure rating : PN 16

Min. fluid temperature : 14 °F

Max. fluid temperature : 284 °F

Max. Ambient temperature : 104 °F

Requested data

Flow : 0/00 US g.p.m.

Head : 0/00 m

Fluid (%) : Water, pure

Fluid Temperature : 68 °F

 Density : 62/322 lb/ft³

 Kinematic viscosity : 1/0818E-5 ft²/s

Vapor pressure : 2/34 kPa

Real duty point

Flow :

Head :

NPSH :

Shaft power P2 :

Efficiency :

Materials

Pump body : Cast iron 250 UNI ISO 185

Support : Cast iron 250 UNI ISO 185

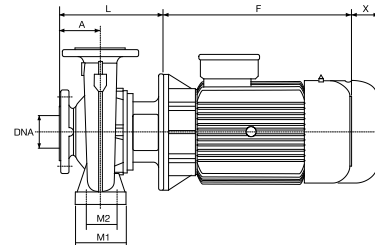
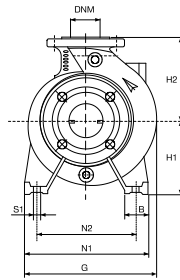
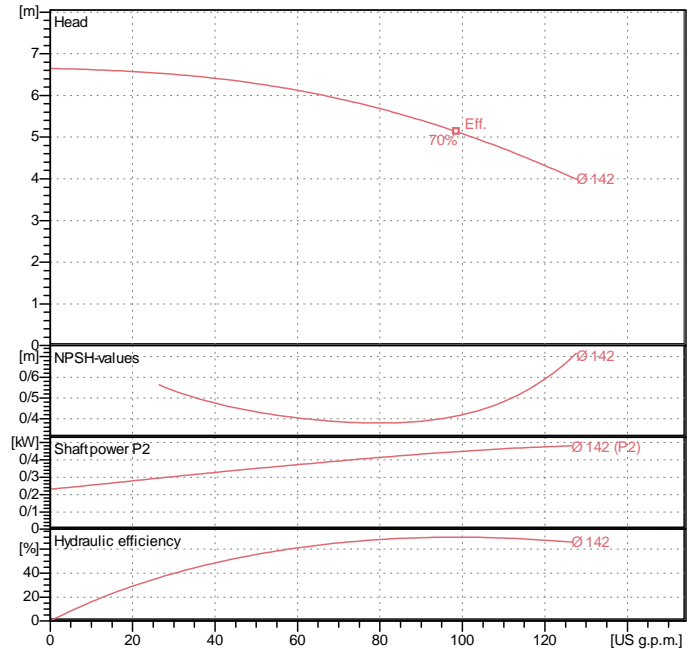
Impeller : Cast iron 250 UNI ISO 185

Mechanical seal : SEE "SHAFT SEAL" SECTION

OR ring : Ethylene propylene (EPDM)

Pump shaft : AISI 304 X5 Cr Ni 1810 UNI 6900/71

Motor : AISI 304 X5 Cr Ni 1810 UNI 6900/71

Curve tolerance according to ISO 9906

Shaft seal

 Type : Rubber
 Stationary part : Carbon
 Rotating part : Silicon carbide
 Elastomer : EPDM

Weight : 47 kg

Dimensions in mm

A	80	H1	112	S1	M10
B	50	H2	140	W	-
DNA	65	L	201	X	100
DNM	40	M1	100		
E	-	M2	70		
F	234	N1	210		
G	235	N2	160		

Motor data

 Nominal power P2 : 0/55 kW
 Rated speed : 1400 rpm
 Rated voltage : 3~ 230 V / 400 V 50 Hz
 Nominal current : 2/6 / 1/5 A
 Degree of protection : IP 55

Pump connection

Suction side : DN 65 / PN 16

Discharge side : DN 40 / PN 16