

Receiver
From

 Society
 Reference
 Address
 Phone
 Fax
 E-mail

Item n° :

1D1111B13

Model :

NKM-G 32-125/142/A/BAQE/0,37/4

Pump data

Impeller size (mm) : 142

MEI ≥ 0,40

Pressure rating : PN 16

Min. fluid temperature : 14 °F

Max. fluid temperature : 284 °F

Max. Ambient temperature : 104 °F

Requested data

Flow : 0/00 US g.p.m.

Head : 0/00 m

Fluid (%) : Water, pure

Fluid Temperature : 68 °F

 Density : 62/322 lb/ft³

 Kinematic viscosity : 1/0818E-5 ft²/s

Vapor pressure : 2/34 kPa

Real duty point

Flow :

Head :

NPSH :

Shaft power P2 :

Efficiency :

Materials

Pump body : Cast iron 250 UNI ISO 185

Support : Cast iron 250 UNI ISO 185

Impeller : Cast iron 250 UNI ISO 185

Mechanical seal : SEE "SHAFT SEAL" SECTION

OR ring : Ethylene propylene (EPDM)

Pump shaft : AISI 304 X5 Cr Ni 1810 UNI 6900/71

Motor : AISI 304 X5 Cr Ni 1810 UNI 6900/71

Shaft seal

Type : Rubber

Stationary part : Carbon

Rotating part : Silicon carbide

Elastomer : EPDM

Motor data

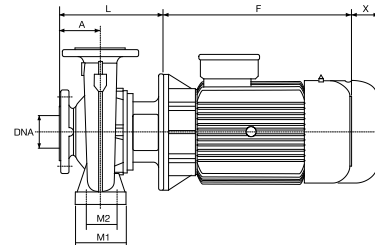
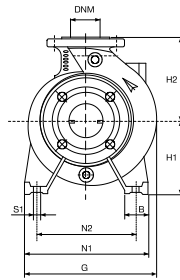
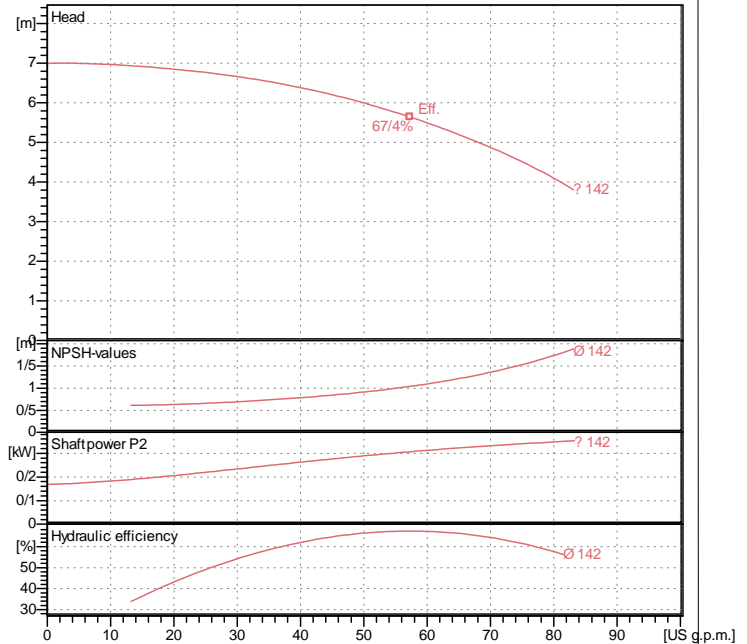
Nominal power P2 : 0/37 kW

Rated speed : 1380 rpm

Rated voltage : 3~ 230 V / 400 V 50 Hz

Nominal current : 1/7 / 0/98 A

Degree of protection : IP 55

Curve tolerance according to ISO 9906

Weight : 35 kg

Dimensions in mm

A	80	H2	140	X	100
B	50	L	201		
DNA	50	M1	100		
DNM	32	M2	70		
F	208	N1	190		
G	234	N2	140		
H1	112	S1	M10		

Pump connection

Suction side : DN 50 / PN 16

Discharge side : DN 32 / PN 16